



QUICKSILVER COUNTY PARK NEWS

Newsletter of the New Almaden Quicksilver County Park Association

SPRING 2007

ISSUE 87

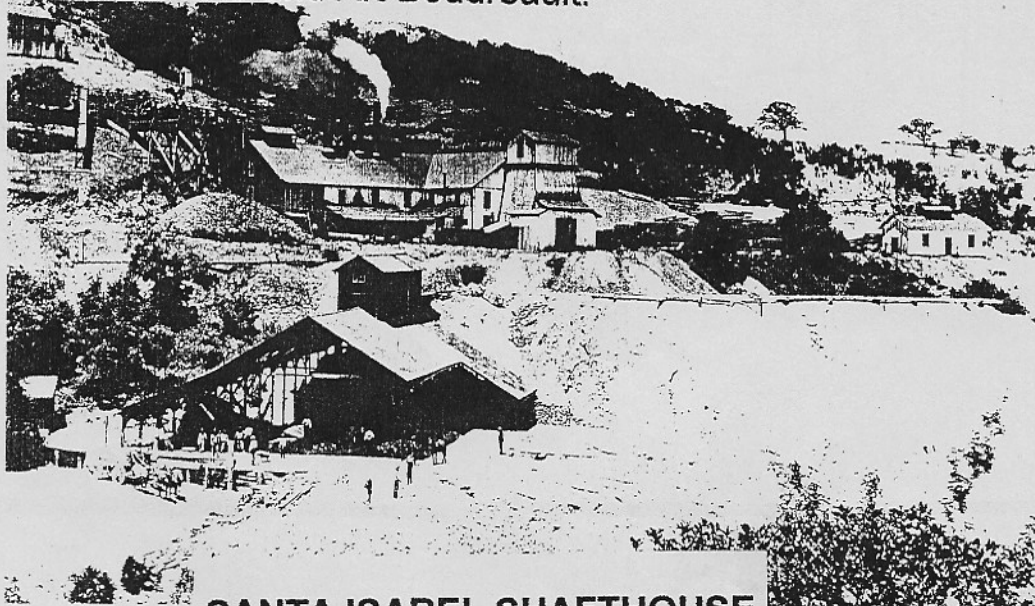
PRESIDENT'S MESSAGE

We will be featuring the Santa Isabel Shafthouse for our 25th Anniversary Pioneer Day. The date is Saturday, October 13, 2007. **SAVE THE DAY!** We are working on the interpretive sign to be dedicated that day and plan for a great celebration.

In conjunction with the New Almaden Community Club, your NAQCPA has designed a monument to be placed at Bulmore Park to honor The Hard Rock Miners and Pat Tillman. Pat was raised in New Almaden and died in Afghanistan fighting for our country. The Santa Clara County Historic Heritage Commission has helped us with financing this monument. We plan to dedicate the monument on New Almaden Day on September 8, 2007.

The latest publication of the book *New Almaden*, is very popular. The Arcadia Publisher has printed a second edition and these are all out in stores and here at the Museum.

.Great work Mike Boulland and Art Boudreault.



SANTA ISABEL SHAFTHOUSE